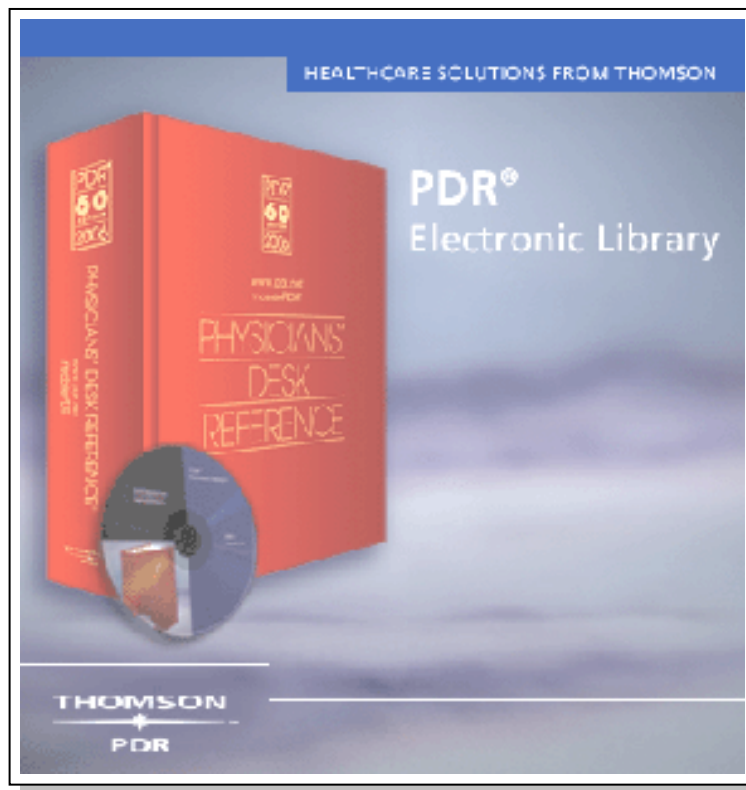


INSTALLATION INSTRUCTIONS

PDR[®] Electronic Library



VERSION A
RELEASE 2006.1



Copyright © 2006 Thomson PDR. All rights reserved.

This manual, as well as the data and software implementation described in it, is furnished under license and may be used or copied only in accordance with the terms of such license. The content of this manual is furnished for informational use only, is subject to change without notice, and should not be construed as a commitment on the part of Thomson Healthcare Inc.

Except as permitted by such license, no part of this publication may be reproduced, stored in a retrieval system, or transmitted, in any form or by any means, electronic, mechanical, recording, or otherwise, without the prior written permission of Thomson Healthcare Inc.

The data and software application, is a tool intended to be used by trained professionals only. The data and the software application is not a substitute for the professional judgment of trained professionals. Thomson Healthcare Inc. assumes no liability for any error or inaccuracies that may appear in this manual. Thomson Healthcare Inc. **MAKES NO WARRANTIES WITH RESPECT TO THIS MANUAL AND DISCLAIMS ANY IMPLIED WARRANTIES OF MERCHANTABILITY AND FITNESS FOR A PARTICULAR PURPOSE.**

Micromedex[®], Physicians' Desk Reference[®], and PDR[®] are trademarks of Thomson Healthcare Inc. All other trademarks are the property of their respective owner.

U.S. Government Customers:

The Products are provided to the Federal government and its agencies ("Government") for use, duplication or disclosure by the Government in accordance with the terms of any applicable contractor/offeror license and the provisions of FAR 12.212 and/or DFARS 227.7202-4, as applicable. CONTRACTOR/OFFEROR is MICROMEDEX, a business of Thomson Healthcare Inc., 6200 S. Syracuse Way, Suite 300, Greenwood Village, Colorado 80111-4740, USA.

The PDR[®] Electronic Library

The PDR[®] Electronic Library can save hours of tedious research, answer tough questions with unparalleled speed, and automatically screen thousands of pages of text to deliver the results you need. The core of the system, the PDR Library database, includes the complete text of three comprehensive pharmaceutical references - Physicians' Desk Reference[®], PDR for Nonprescription Drugs and Dietary Supplements[™], and PDR for Ophthalmic Medicines[™]. A fast, intuitive retrieval system makes it easy to find any drug in a flash.

How to Contact Thomson PDR

Technical support for the PDR Electronic Library is provided by our Customer Support department:

Toll-Free Phone Number (within US & Canada):

(888) 632-9998

International:

+1 201 358-7200

E-mail address:

PDR.CustomerService@Thomson.com

Hours of Operation:

Monday through Thursday ... 8:30 a.m. to 8:00 p.m. (EST)

Friday 9:30 a.m. to 8:00 p.m. (EST)

Information on the wide range of products available from Thomson Healthcare is also available at our site on the World Wide Web: (<http://www.PDRbookstore.com/>).

System Requirements

- Pentium[®] class Processor
- Any Microsoft Windows[®] version currently supported by Microsoft *
(Thomson Micromedex develops and tests under Windows 2000 and XP)
- 32 MB RAM
- Browser: Microsoft Internet Explorer 5.5 or higher
- Disk Space Required: 580 MB

To access the PDR Electronic Library application, users must be designated as "Super Users" (defined in Microsoft Windows operating system security).

* In the Microsoft Windows[®] environment, Micromedex applications are developed and tested to operate within all current versions supported by Microsoft. Certain features and functions within Micromedex applications may not work as intended for users with versions no longer supported by their operating system vendor.

Install the PDR® Electronic Library

Note: Close or end all other programs that are open or running on your PC during the entire installation

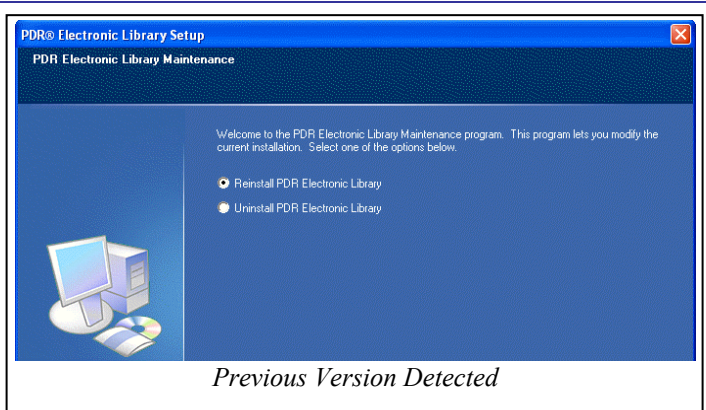
Start the Installation

1. Insert the CD in the CD-ROM drive.
Press **Start** → **Run...** from the Task Bar.
Type: D:\SETUP then click OK. (Substitute the appropriate drive letter if D:\ is not your CD-ROM drive).

2. Update customers:

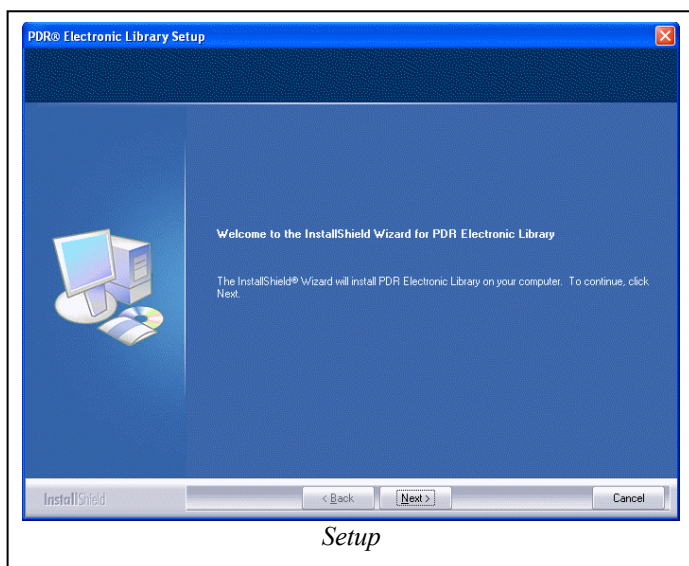
If you are a new customer, skip to step #3.

If you are a current subscriber installing an update release, you will see the “*Library Maintenance*” screen. Select the **Reinstall** option then click the **Next >** button.

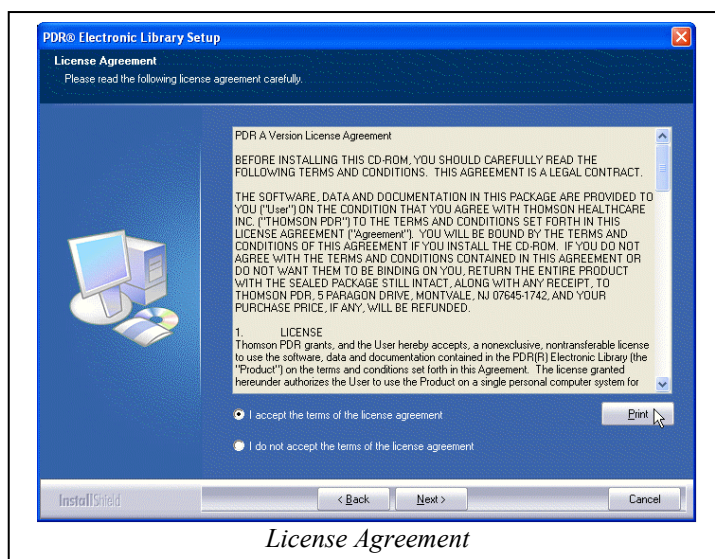


When you see the “Maintenance Complete” screen and the message, “*InstallShield Wizard has finished performing maintenance operations on PDR Electronic Library*” click the **Finish** button.

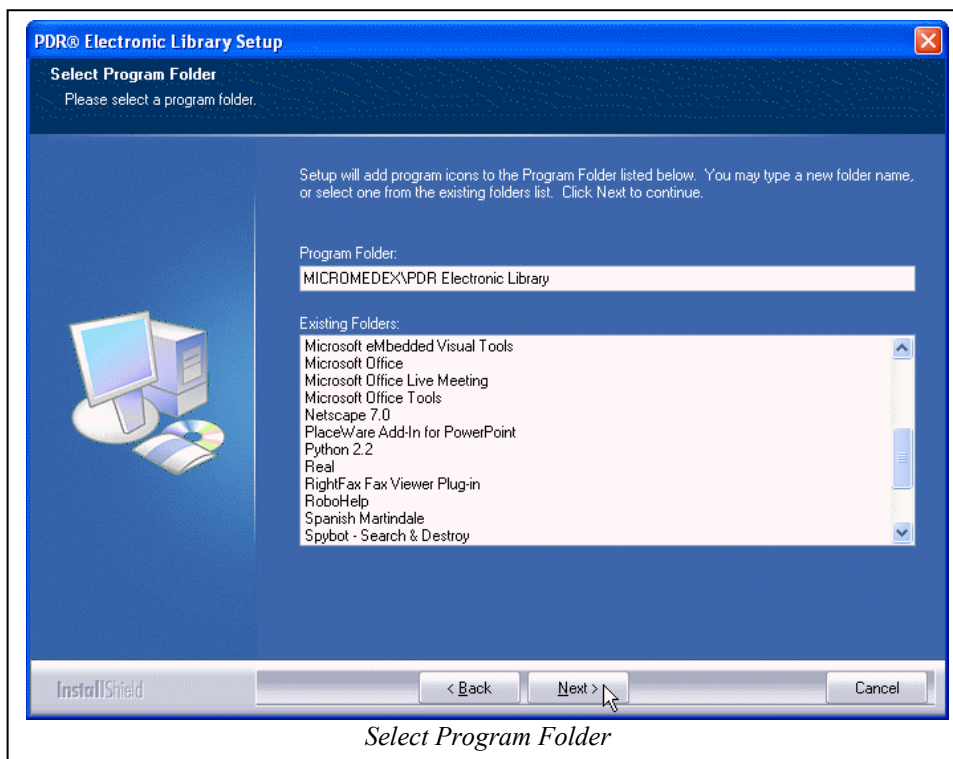
3. Install the program: From the *PDR® Electronic Library Setup* screen, click **Next >**.



4. *License Agreement*: Read and accept the terms of the *License Agreement*. Click the “I accept the terms of the license agreement” option, then click **N**ext > to continue the installation. Click **P**rint if you wish to print a copy of the license agreement.

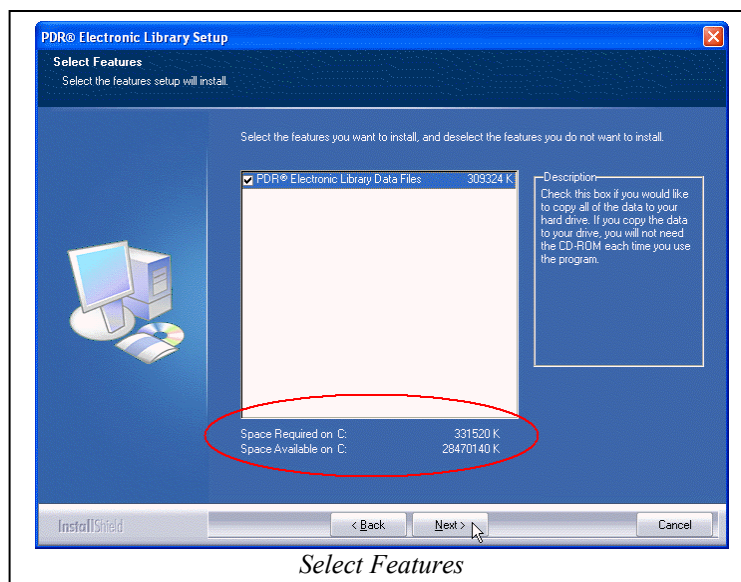


5. *Choose Destination Location* (not pictured): Click **N**ext > to install PDR Electronic Library to the default folder or **B**rowse... to choose a different destination location.
6. *Select Program Folder*: The PDR[®] Electronic Library is the default program folder for the program. Click **N**ext > to accept this name, or type a different name in the Program Folders field.



7. **Select Features:** To install the PDR[®] data to your hard drive:
Verify that the *PDR[®] Electronic Library Data Files* checkbox is selected (checked) and then click **N**ext >. This method will allow you to run the program without the CD-ROM in the CD drive.

If space is not available to install the data to your hard drive, remove the checkmark from the *PDR[®] Electronic Library Data Files* checkbox then click **N**ext >. This method will require you to have the PDR[®] CD-ROM in the CD-ROM drive when running the program.



8. **Start Copying Files** (not pictured): Review your current settings to verify your choices. Click <**B**ack if changes are necessary, or click **N**ext > to continue.
9. When the PDR[®] Electronic Library has completed the installation, you will be presented with the *InstallShield Wizard Complete* message (not pictured). Click **F**inish.

This completes the PDR[®] Electronic Library installation.

Accessing the PDR[®] Electronic Library

If you accepted the default destination location:

Start → Programs → Micromedex → PDR[®] Electronic Library → PDR[®] Electronic Library

- *or* - double-click the PDR Electronic Library desktop icon.

